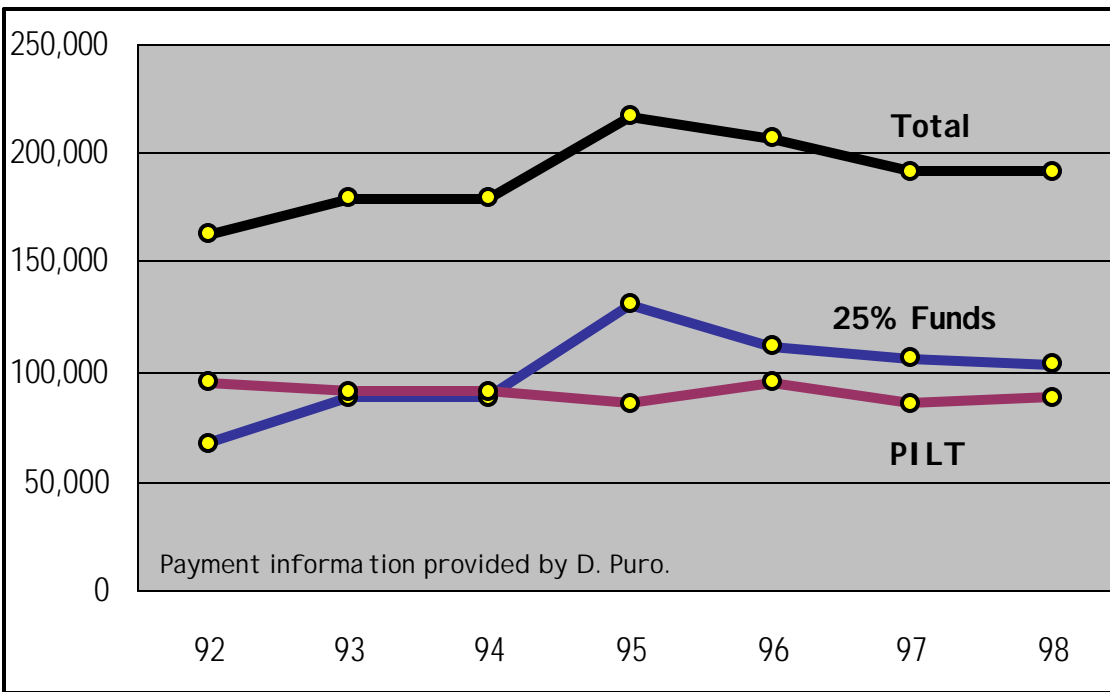


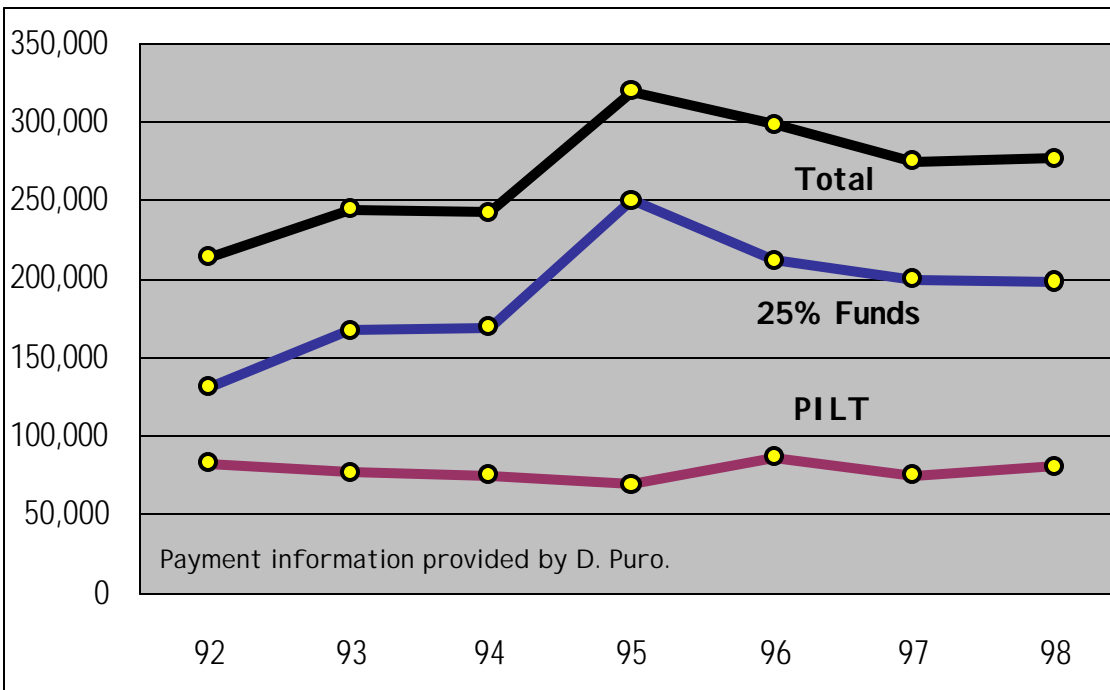
**PAYMENTS MADE TO ALGER COUNTY
BY THE HIAWATHA NATIONAL FOREST
1992-1998 112,991 ACRES IN 1998**

DRAFT
document



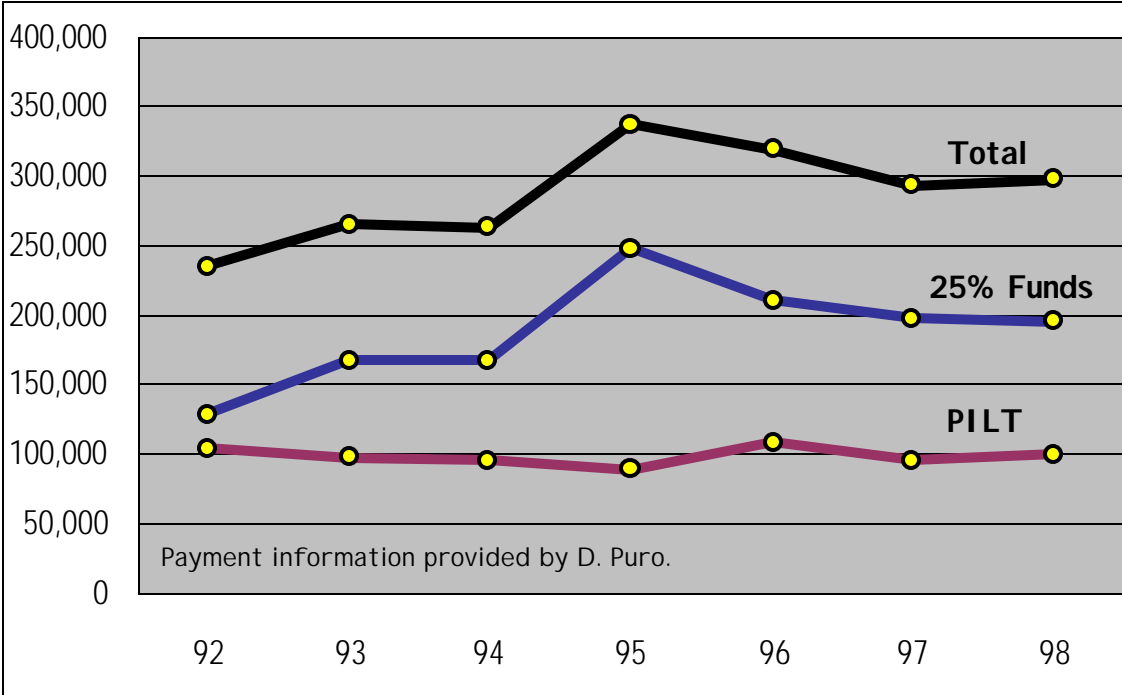
**PAYMENTS MADE TO CHIPPEWA COUNTY
BY THE HIAWATHA NATIONAL FOREST
1992-1998 142,036 ACRES IN 1998**

DRAFT
document



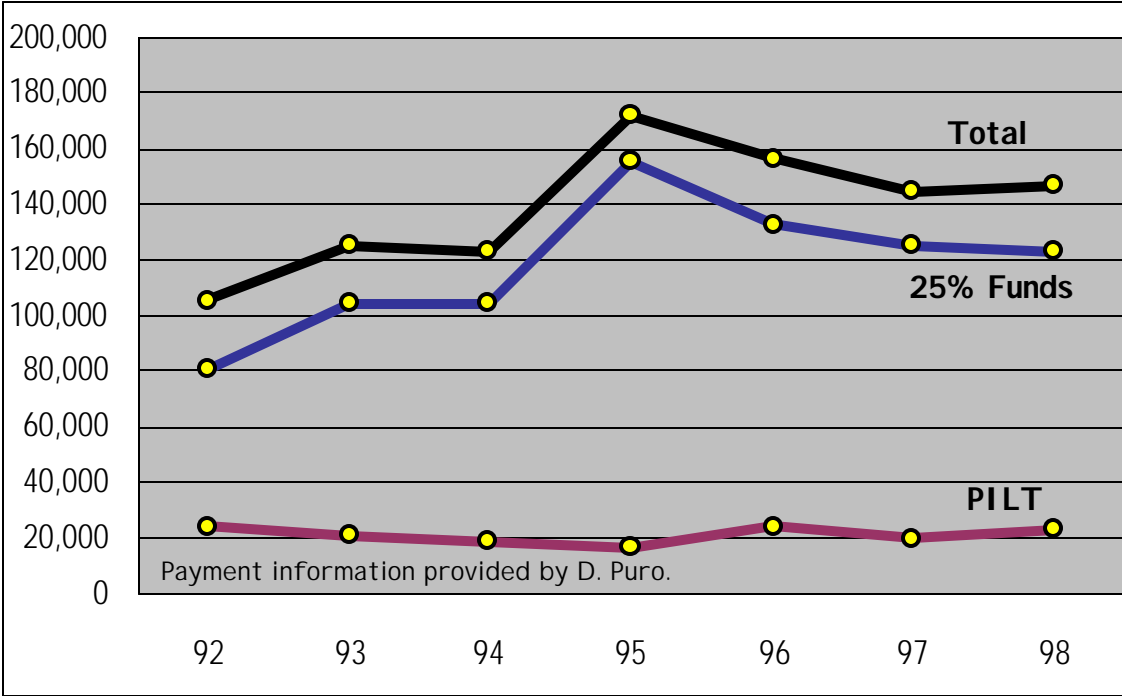
**PAYMENTS MADE TO DELTA COUNTY
BY THE HIAWATHA NATIONAL FOREST
1992-1998 170,841 ACRES IN 1998**

DRAFT
document



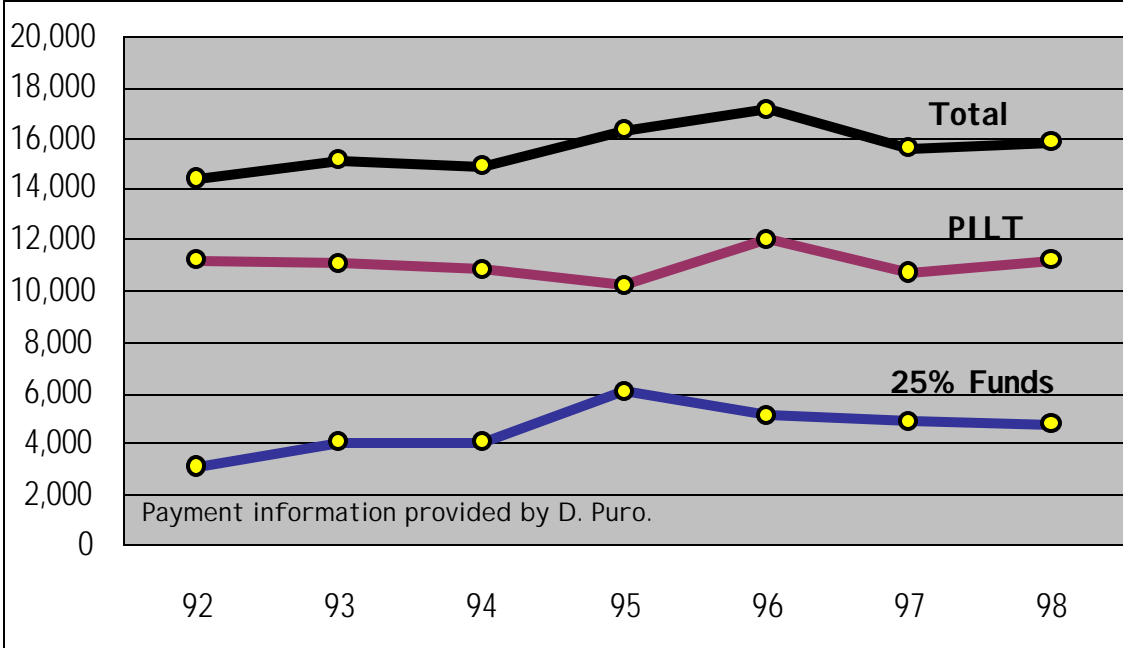
**PAYMENTS MADE TO MACKINAC COUNTY
BY THE HIAWATHA NATIONAL FOREST
1992-1998 51,993 ACRES IN 1998**

DRAFT
document



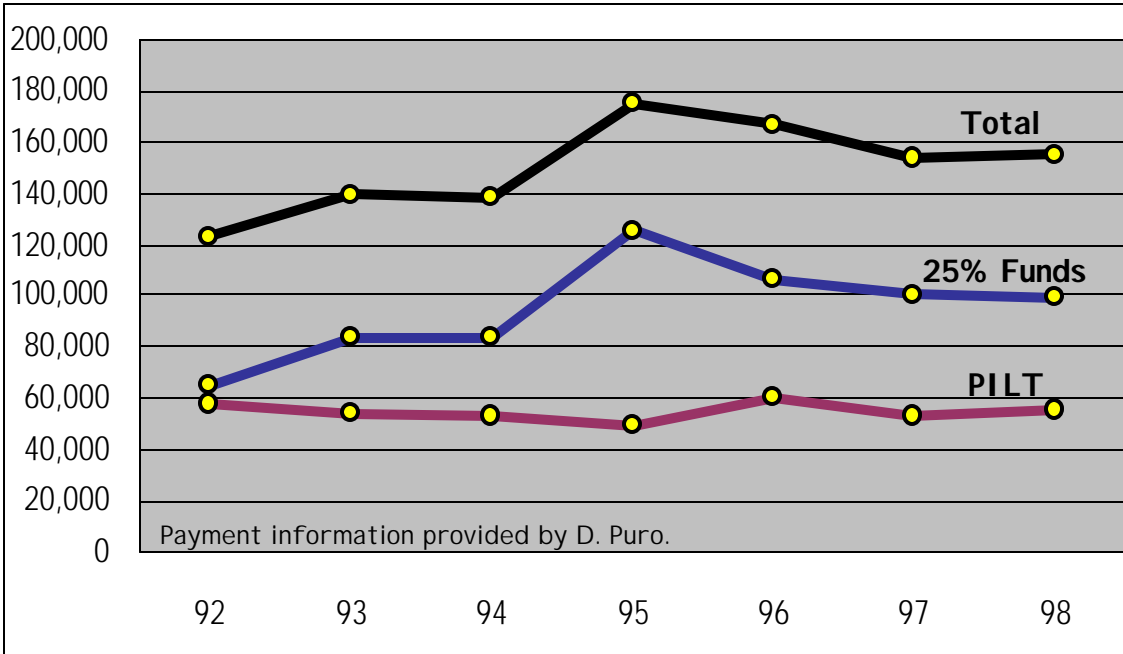
**PAYMENTS MADE TO MARQUETTE COUNTY
BY THE HIAWATHA NATIONAL FOREST
1992-1998 5,866 ACRES IN 1998**

DRAFT
document



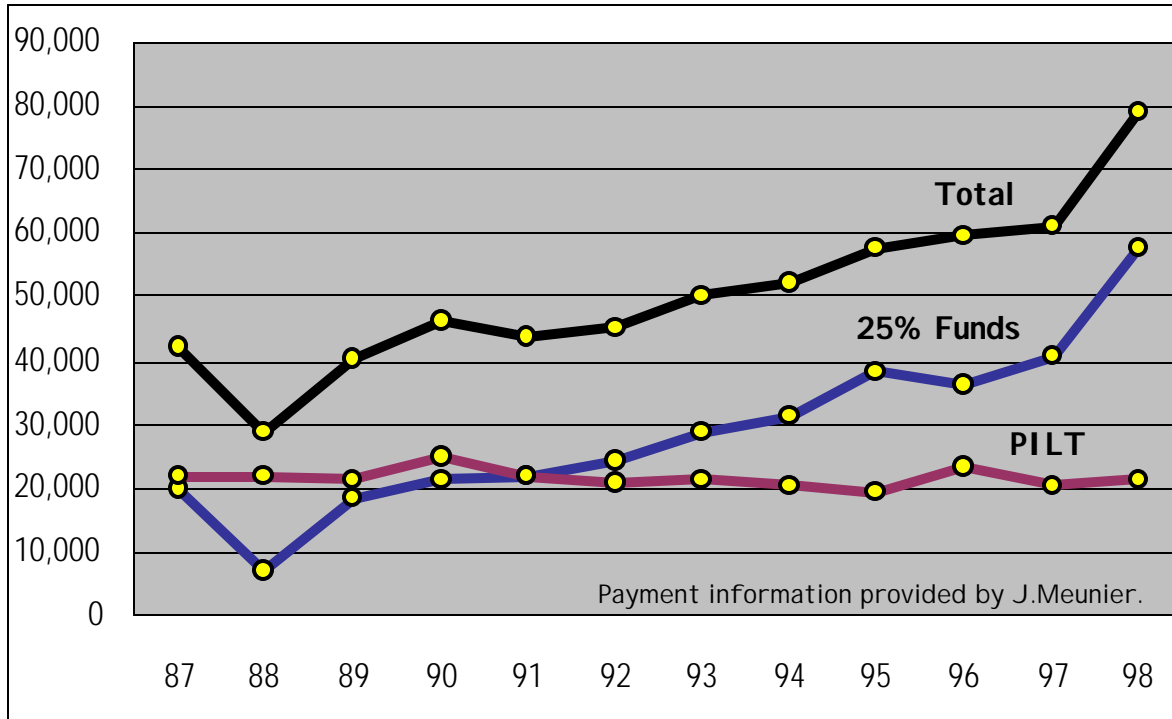
**PAYMENTS MADE TO SCHOOLCRAFT COUNTY
BY THE HIAWATHA NATIONAL FOREST
1992-1998 90,345 ACRES IN 1998**

DRAFT
document



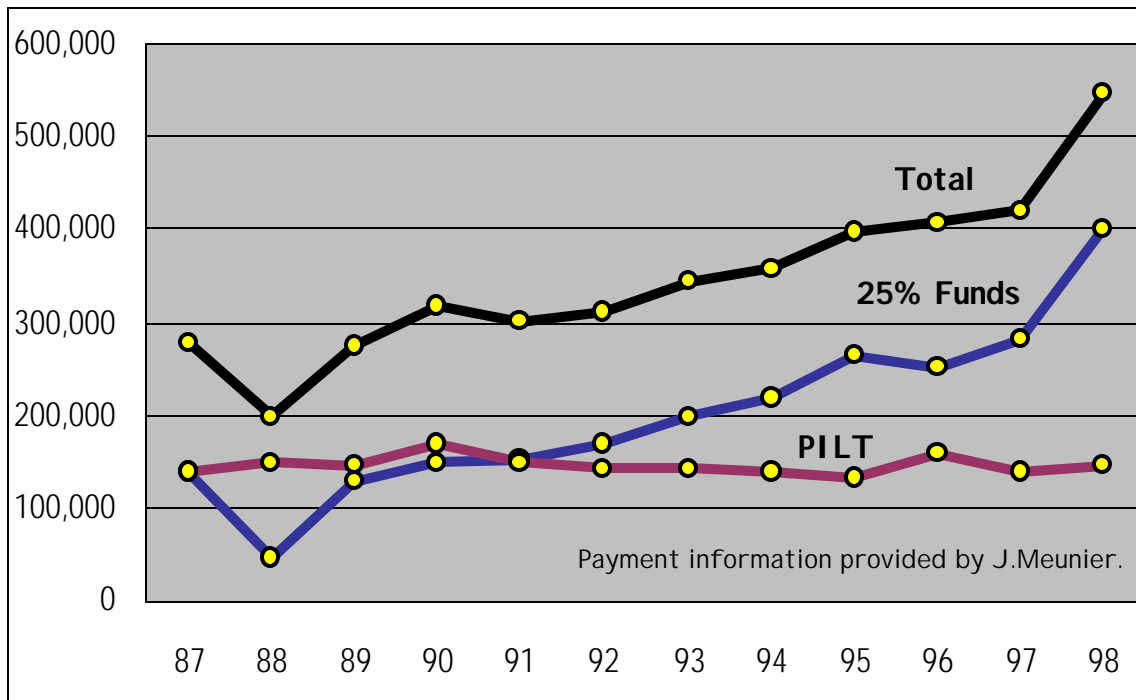
**PAYMENTS MADE TO BARAGA COUNTY
BY THE OTTAWA NATIONAL FOREST
1987-1998 44,913 ACRES IN 1998**

DRAFT
document



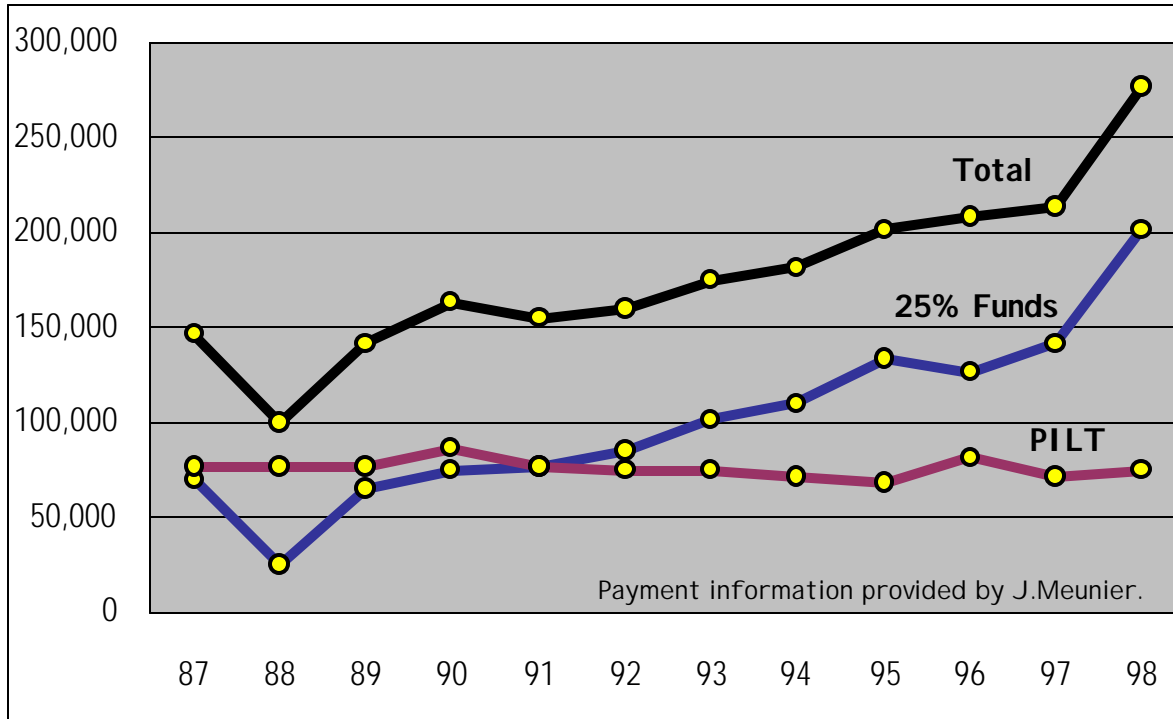
**PAYMENTS MADE TO GOGEBIC COUNTY
BY THE OTTAWA NATIONAL FOREST
1987-1998 311,511 ACRES IN 1998**

DRAFT
document



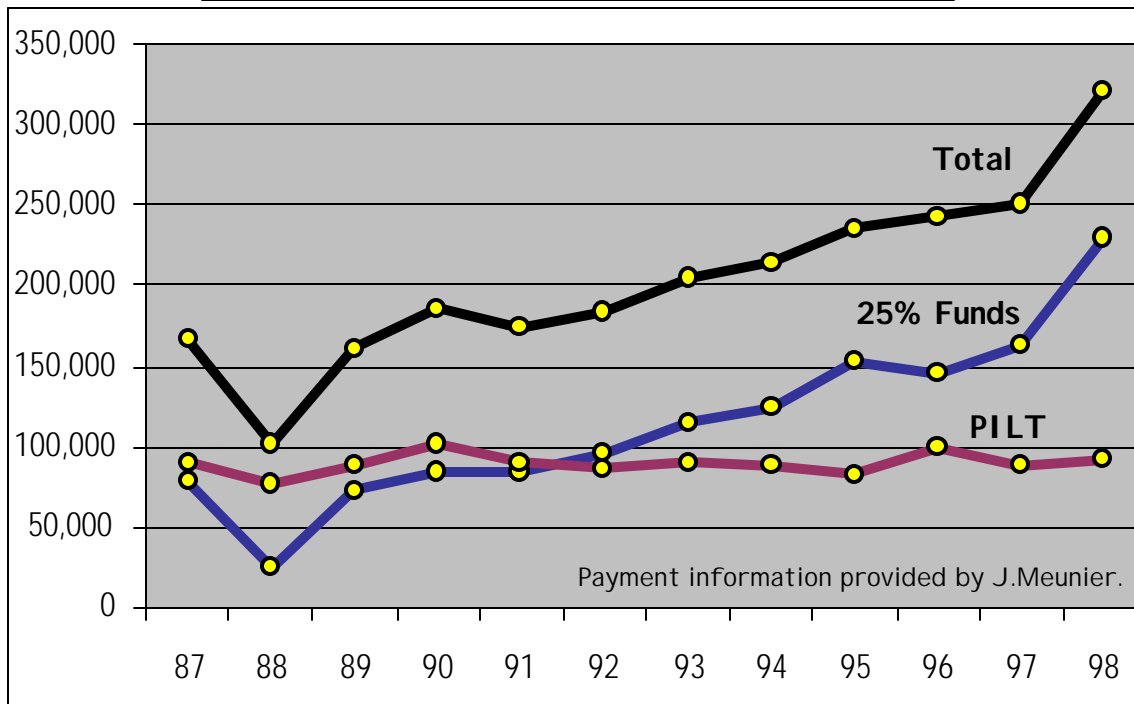
**PAYMENTS MADE TO HOUGHTON COUNTY
BY THE OTTAWA NATIONAL FOREST
1987-1998 156,612 ACRES IN 1998**

DRAFT
document



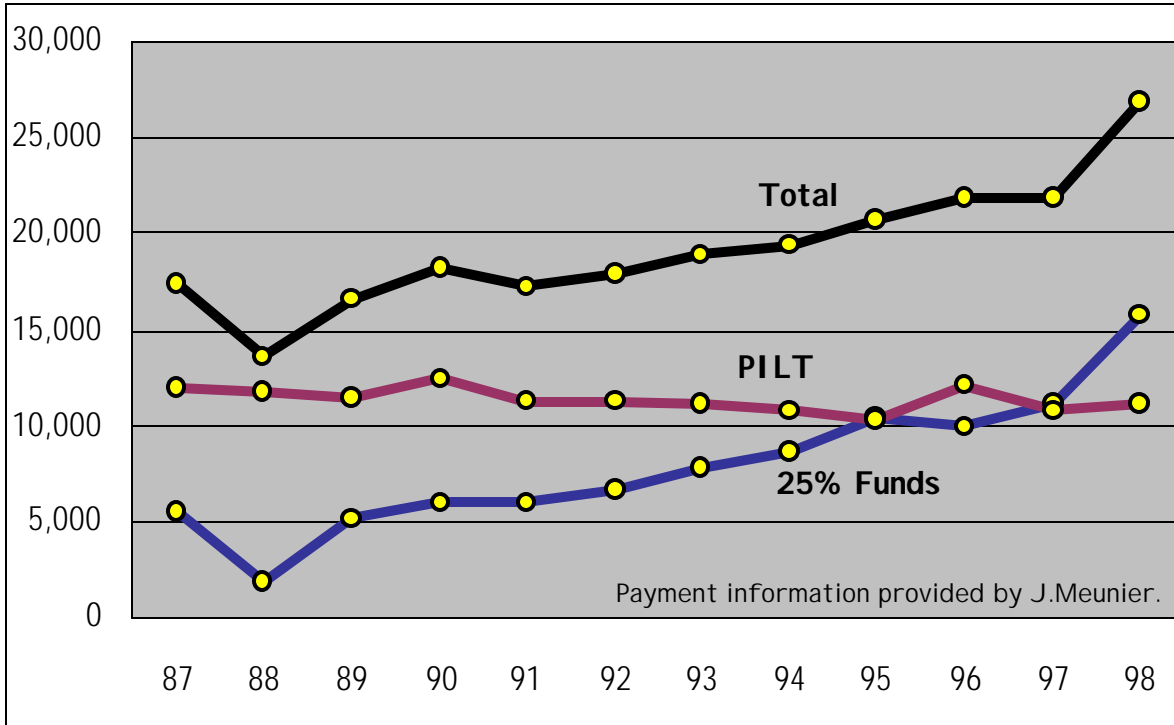
**PAYMENTS MADE TO IRON COUNTY
BY THE OTTAWA NATIONAL FOREST
1987-1998 178,786 ACRES IN 1998**

DRAFT
document



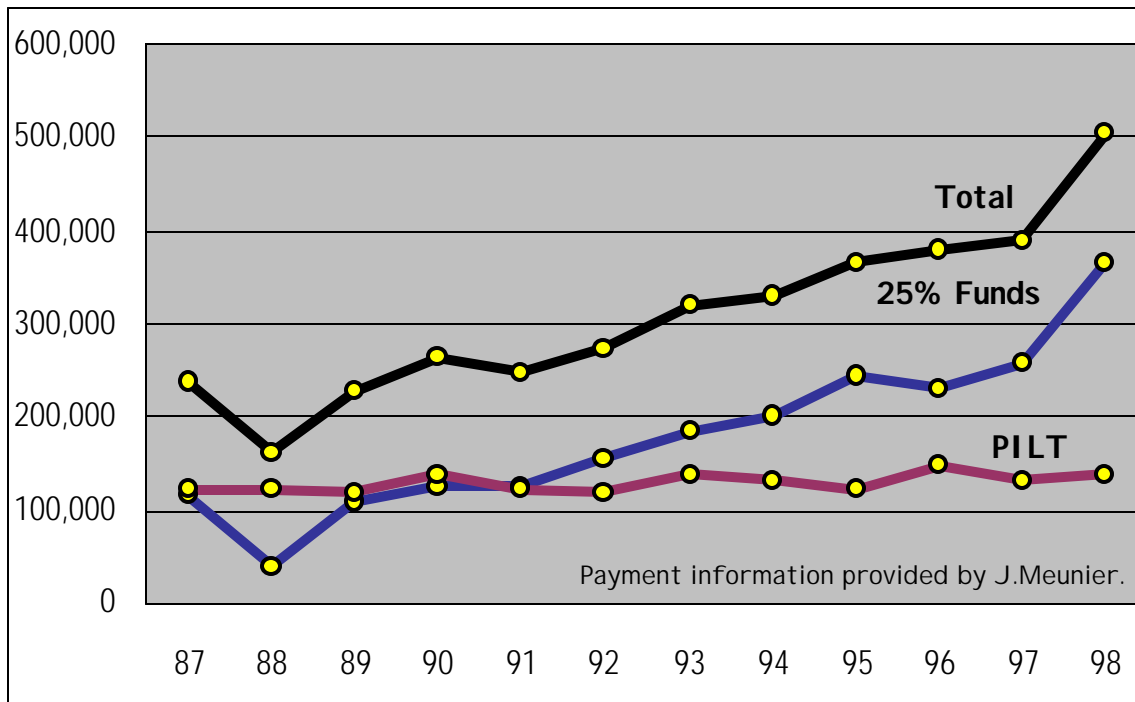
**PAYMENTS MADE TO MARQUETTE COUNTY
BY THE OTTAWA NATIONAL FOREST
1987-1998 12,211 ACRES IN 1998**

DRAFT
document



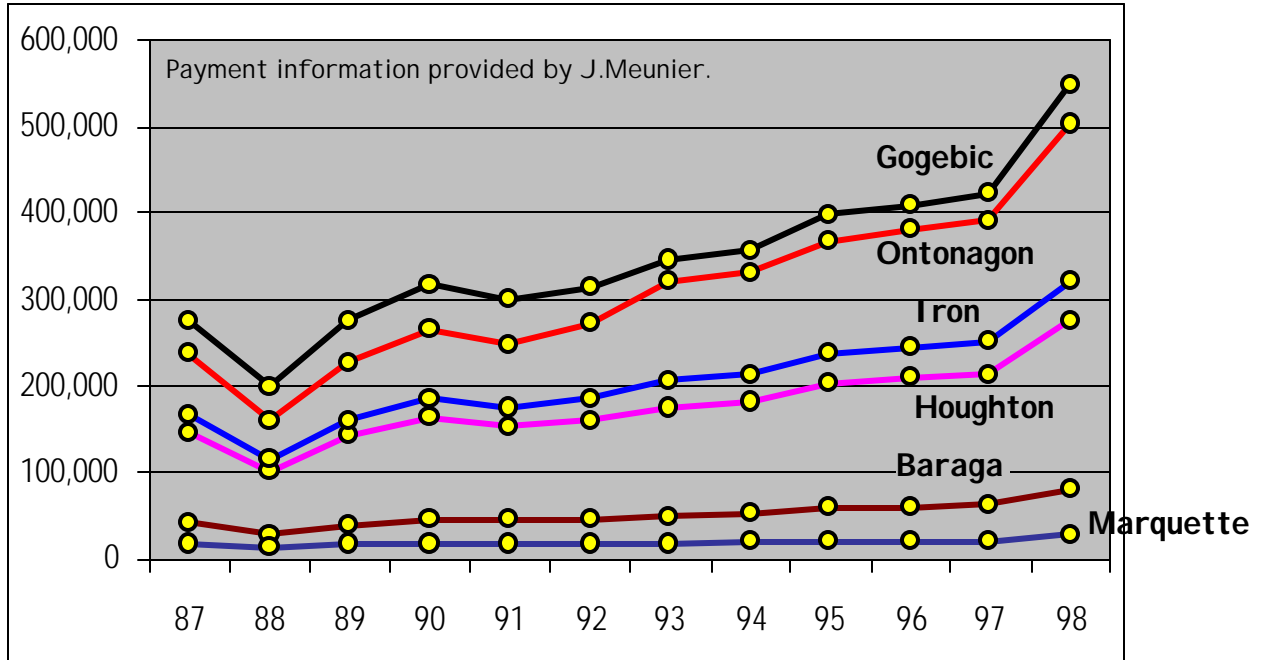
**PAYMENTS MADE TO ONTONAGON COUNTY
BY THE OTTAWA NATIONAL FOREST
1987-1998 285,418 ACRES IN 1998**

DRAFT
document



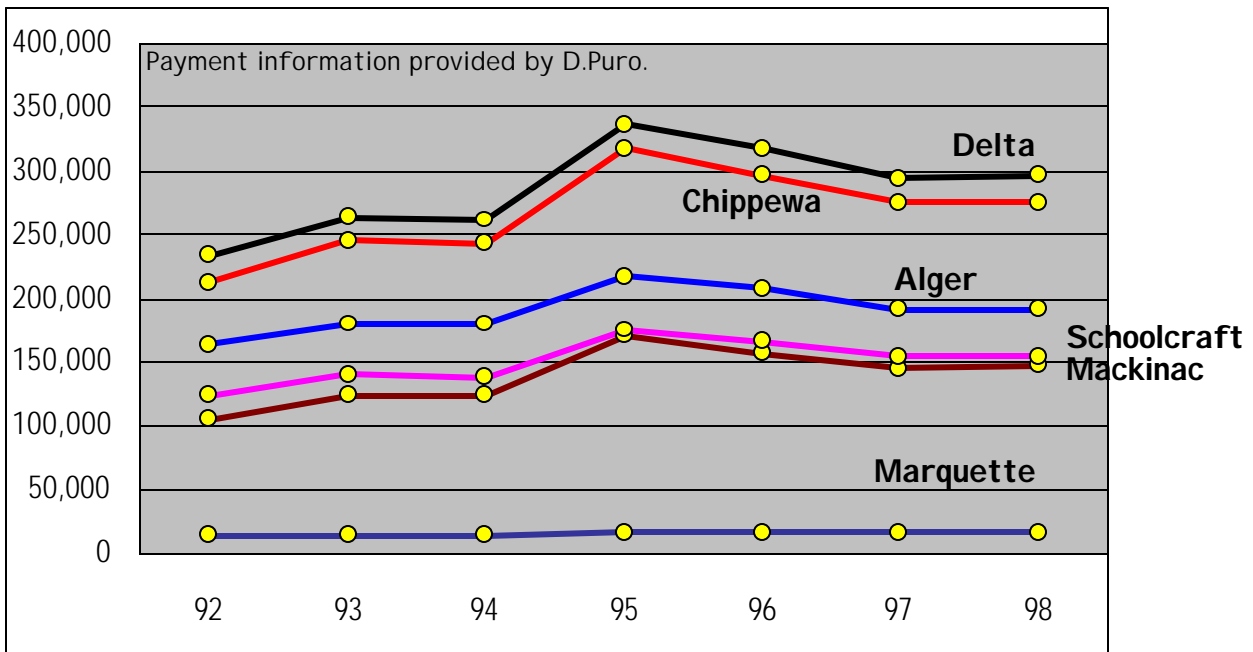
**PAYMENTS MADE TO COUNTIES
BY THE OTTAWA NATIONAL FOREST
1987-1998 (PILT & 25% FUNDS)**

DRAFT
document



**PAYMENTS MADE TO COUNTIES
BY THE HIAWATHA NATIONAL FOREST
1992-1998 (PILT & 25% FUNDS)**

DRAFT
document



OTTAWA NATIONAL FOREST

County	Net NF Acreage	25% Fund	PILT	Total \$\$\$ Returned
FY 1987				
Baraga	44,593	19,964	22,080	42,044
Gogebic	309,634	138,623	138,203	276,826
Houghton	156,109	69,890	77,355	147,245
Iron	173,200	77,542	89,769	167,311
Marquette	12,174	5,450	11,946	17,396
Ontonagon	257,532	115,297	121,753	237,050
Total FY 1987	953,242	426,766	461,108	887,874
FY 1988				
	Acres	25%	PILT	\$Total
Baraga	44,593	6,896	21,863	28,759
Gogebic	309,737	47,899	150,008	197,907
Houghton	156,589	24,215	76,501	100,716
Iron	172,884	26,735	89,635	116,370
Marquette	12,174	1,883	11,755	13,638
Ontonagon	257,612	39,838	121,423	161,261
Total FY 1988	953,589	147,466	471,185	618,651
FY 1989				
	Acres	25%	PILT	\$Total
Baraga	44,593	18,615	21,440	40,055
Gogebic	309,777	129,312	146,273	275,585
Houghton	156,589	65,366	75,931	141,297
Iron	172,884	72,168	88,362	160,530
Marquette	12,174	5,082	11,518	16,600
Ontonagon	257,612	107,536	119,792	227,328
Total FY 1989	953,629	398,079	463,316	861,395
FY 1990				
	Acres	25%	PILT	\$Total
Baraga	44,593	21,606	24,692	46,298
Gogebic	309,777	149,956	168,984	318,940
Houghton	156,605	75,809	87,350	163,159
Iron	17,288	83,689	101,013	184,702
Marquette	12,174	5,893	12,403	18,296
Ontonagon	257,926	124,856	138,657	263,513
Total FY 1990	953,959	461,809	533,099	994,908

FY 1991	Acres	25%	PILT	\$Total
Baraga	44,633	21,899	21,792	43,691
Gogebic	309,777	151,988	148,631	300,619
Houghton	156,605	76,836	77,432	154,268
Iron	173,158	84,958	89,655	174,613
Marquette	12,174	5,973	11,295	17,268
Ontonagon	257,926	126,551	121,967	248,518
Total FY 1991	954,273	468,205	470,772	938,977
FY 1992				
	Acres	25%	PILT	\$Total
Baraga	44,913	24,452	21,045	45,497
Gogebic	310,937	169,285	143,470	312,755
Houghton	156,605	85,261	74,821	160,082
Iron	177,275	96,515	86,981	183,496
Marquette	12,174	6,628	11,223	17,851
Ontonagon	284,614	154,954	117,624	272,578
Total FY 1992	986,518	537,097	455,164	992,261
FY 1993				
	Acres	25%	PILT	\$Total
Baraga	44,913	28,918	21,181	50,099
Gogebic	310,898	200,183	143,832	344,015
Houghton	156,605	100,835	74,564	175,399
Iron	178,824	115,142	89,751	204,893
Marquette	12,211	7,862	11,042	18,904
Ontonagon	284,893	183,438	137,272	320,710
Total FY 1993	988,344	636,382	477,642	1,114,024
FY 1994				
	Acres	25%	PILT	\$Total
Baraga	44,913	31,436	20,543	51,979
Gogebic	310,898	217,607	139,478	357,085
Houghton	156,605	109,612	72,458	182,070
Iron	178,824	125,164	88,383	213,547
Marquette	12,211	8,546	10,839	19,385
Ontonagon	285,052	199,516	130,380	329,896
Total FY 1994	988,503	691,881	462,081	1,153,962

DRAFT
document

FY 1995	Acres	25%	PILT	\$Total
Baraga	44,913	38,347	19,331	57,678
Gogebic	310,936	265,477	131,203	396,680
Houghton	156,402	133,536	68,198	201,734
Iron	178,904	152,748	83,088	235,836
Marquette	12,211	10,426	10,249	20,675
Ontonagon	285,418	243,690	122,767	366,457
Total FY 1995	988,784	844,224	434,836	1,279,060
FY 1996	Acres	25%	PILT	\$Total
Baraga	44,913	36,304	23,205	59,509
Gogebic	310,936	251,336	157,786	409,122
Houghton	156,402	126,423	81,626	208,049
Iron	178,904	144,612	99,197	243,809
Marquette	12,211	9,870	12,054	21,924
Ontonagon	285,418	230,709	147,787	378,496
Total FY 1996	988,784	799,254	521,655	1,320,909
FY 1997	Acres	25%	PILT	\$Total
Baraga	44,913	40,660	20,523	61,183
Gogebic	310,936	281,495	139,456	420,951
Houghton	156,402	141,593	72,236	213,829
Iron	178,904	161,965	87,930	249,895
Marquette	12,211	11,055	10,741	21,796
Ontonagon	285,418	258,394	130,677	389,071
Total FY 1997	988,784	895,162	461,563	1,356,725
FY 1998	Acres	25%	PILT	\$Total
Baraga	44,913	57,675	21,500	79,175
Gogebic	311,511	400,029	146,223	546,252
Houghton	156,612	201,114	75,641	276,755
Iron	178,786	229,589	91,823	321,412
Marquette	12,211	15,681	11,133	26,814
Ontonagon	285,418	366,522	136,889	503,411
Total FY 1998	989,451	1,270,610	483,209	1,753,819

HI AWATHA NATIONAL FOREST

HIAWATHA NATIONAL FOREST				
FY 1992	Acres	25%	PILT	\$Total
Alger	111,918	68,079	94,817	162,896
Chippewa	141,836	130,328	83,454	213,782
Delta	170,831	128,985	105,253	234,238
Mackinac	51,656	80,947	24,391	105,338
Marquette	5,866	3,131	11,223	14,354
Schoolcraft	58,168	65,372	58,168	123,540
Total FY 1992	0	476,842	377,306	854,148
FY 1993	Acres	25%	PILT	\$Total
Alger	111,919	87,891	91,289	179,180
Chippewa	141,996	168,252	76,889	245,141
Delta	170,841	166,518	98,639	265,157
Mackinac	51,669	104,569	20,244	124,813
Marquette	5,866	4,042	11,042	15,084
Schoolcraft	90,305	84,395	54,840	139,235
Total FY 1993	0	615,667	352,943	968,610
FY 1994	Acres	25%	PILT	\$Total
Alger	111,920	88,166	90,784	178,950
Chippewa	141,996	168,519	74,088	242,607
Delta	170,841	166,782	95,885	262,667
Mackinac	51,787	104,735	18,588	123,323
Marquette	5,866	4,049	10,839	14,888
Schoolcraft	90,305	84,529	53,441	137,970
Total FY 1994	0	616,780	343,625	960,405
FY 1995	Acres	25%	PILT	\$Total
Alger	112,117	131,328	85,503	216,831
Chippewa	141,996	250,480	68,399	318,879
Delta	170,841	247,899	89,340	337,239
Mackinac	51,767	155,674	16,155	171,829
Marquette	5,866	6,017	10,249	16,266
Schoolcraft	90,305	125,681	49,927	175,608
Total FY 1995	0	917,079	319,573	1,236,652

FY 1996	Acres	25%	PILT	\$Total
Alger	112,391	111,860	95,466	207,326
Chippewa	141,996	212,355	85,735	298,090
Delta	170,841	210,167	108,695	318,862
Mackinac	51,767	132,176	24,254	156,430
Marquette	5,866	5,101	12,054	17,155
Schoolcraft	90,345	106,551	60,240	166,791
Total FY 1996	0	778,210	386,444	1,164,654
FY 1997	Acres	25%	PILT	\$Total
Alger	112,990	105,749	85,604	191,353
Chippewa	142,036	200,753	74,617	275,370
Delta	170,841	198,684	95,636	294,320
Mackinac	51,993	124,955	19,955	144,910
Marquette	5,866	4,823	10,741	15,564
Schoolcraft	90,345	100,730	53,180	153,910
Total FY 1997	0	735,694	339,733	1,075,427
FY 1998	Acres	25%	PILT	\$Total
Alger	112,991	104,260	88,220	192,480
Chippewa	142,036	197,244	79,933	277,177
Delta	170,841	195,887	100,896	296,783
Mackinac	51,993	123,196	23,240	146,436
Marquette	5,866	4,755	11,133	15,888
Schoolcraft	90,345	99,312	55,846	155,158
Total FY 1998	0	724,654	359,268	1,083,922

DRAFT
document